

THE JACKSON RENAISSANCE

1420 W 16th Street
Davenport, Iowa 52804

WORN JERABEK ARCHITECTS, P.C.

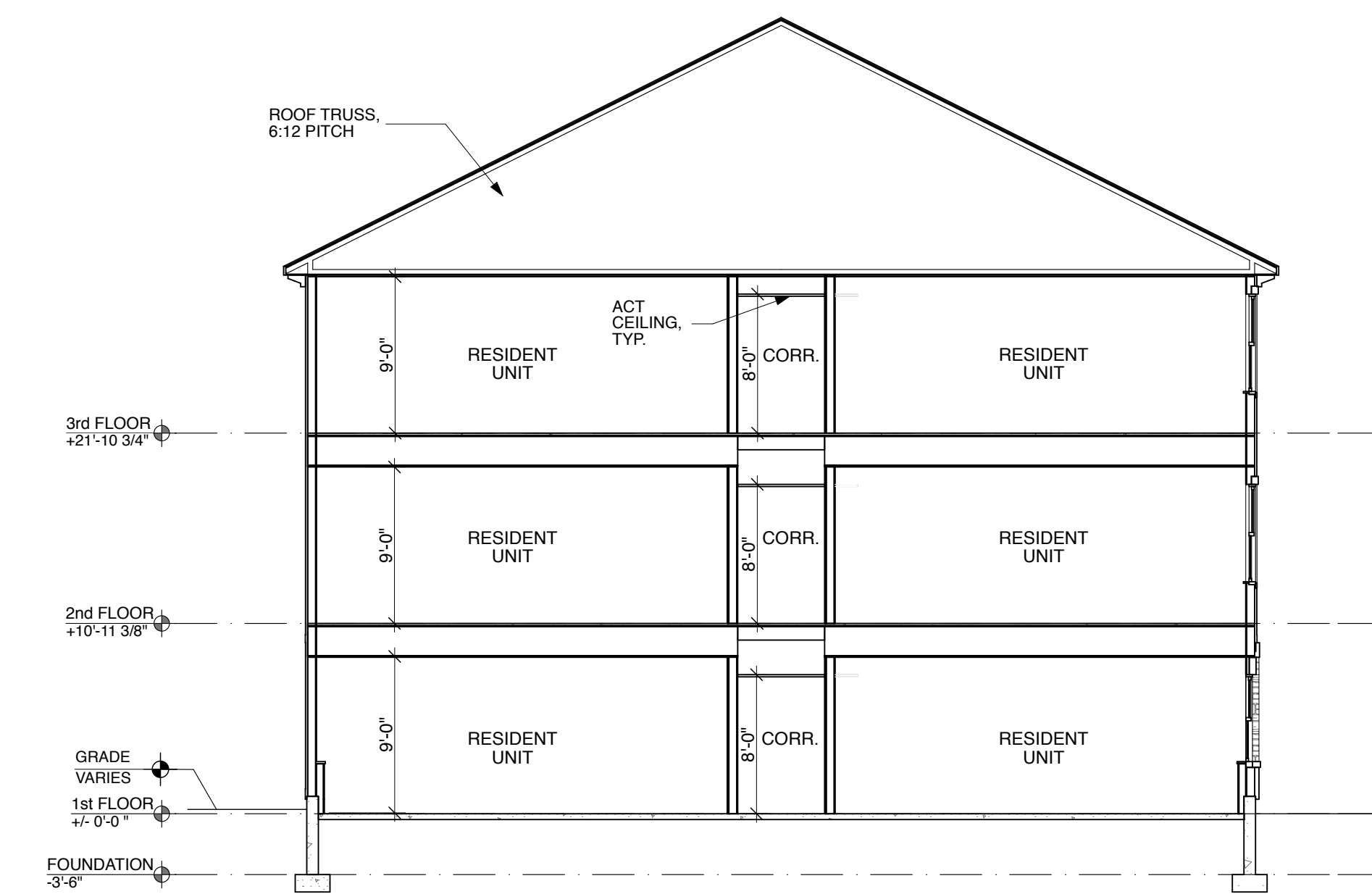
212 West Superior, Suite 600 Chicago, IL 60654
Ph: 312.642.5587 Fax: 312.642.4189 www.wjworks.com

NOTES:



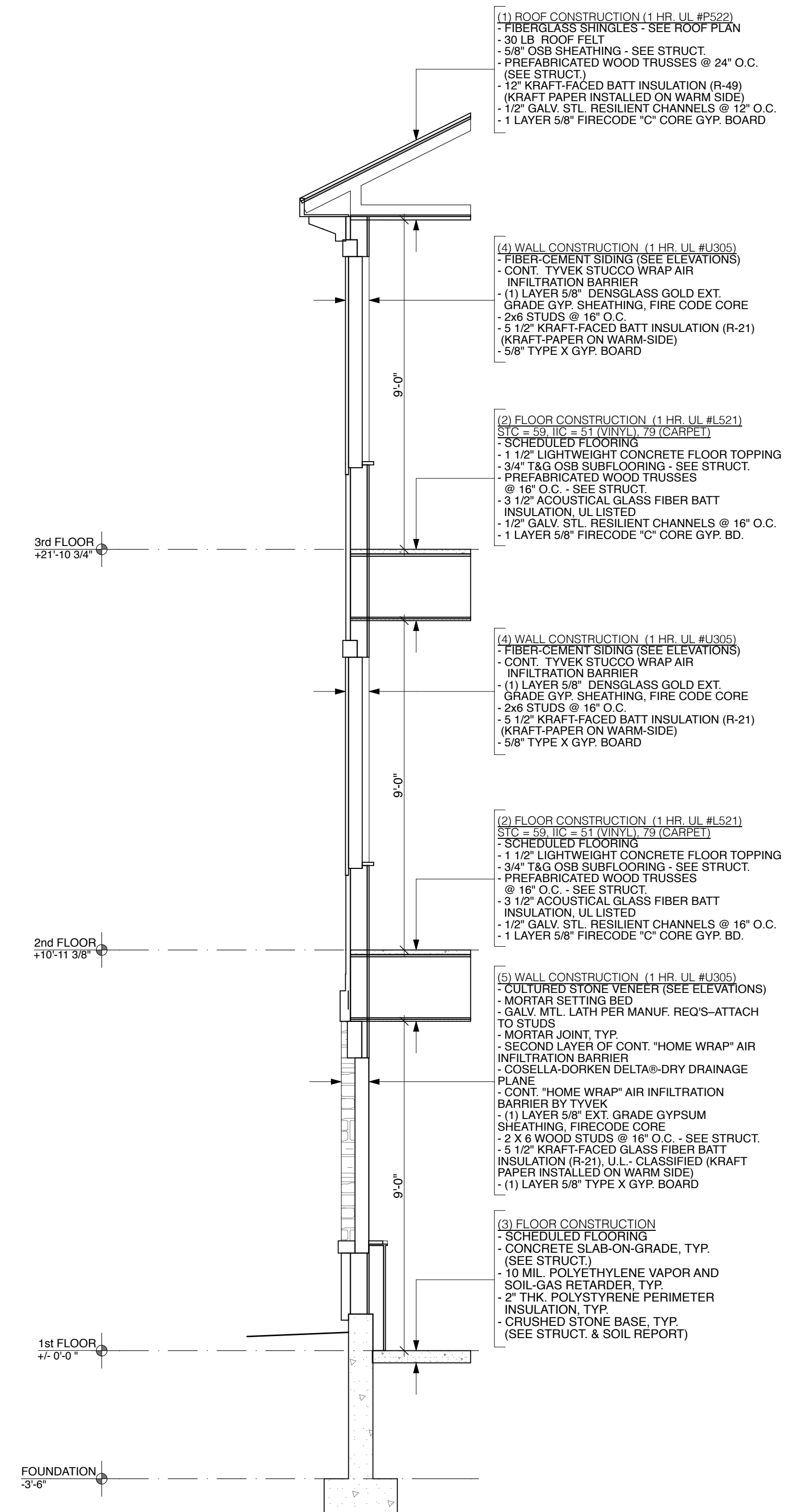
1 N-S BUILDING SECTION

SCALE: 1/8" = 1'-0"



2 E-W BUILDING SECTION

SCALE: 1/8" = 1'-0"



3 TYPICAL WALL SECTION

SCALE: 3/8" = 1'-0"

- (1) ROOF CONSTRUCTION (1 HR. UL #P522)
 - FIBERGLASS SHINGLES - SEE ROOF PLAN
 - 30 LB ROOF FELT
 - 5/8" OSB SHEATHING - SEE STRUCT.
 - PREFABRICATED WOOD TRUSSES @ 24" O.C. (SEE STRUCT.)
 - 12" KRAFT-FACED BATT INSULATION (R-49) (KRAFT PAPER INSTALLED ON WARM SIDE)
 - 1/2" GALV. STL. RESILIENT CHANNELS @ 12" O.C.
 - 1 LAYER 5/8" FIRECODE "C" CORE GYP. BOARD

- (4) WALL CONSTRUCTION (1 HR. UL #U305)
 - FIBER-CEMENT SIDING (SEE ELEVATIONS)
 - CONT. TYVEK STUCCO WRAP AIR INFILTRATION BARRIER
 - (1) LAYER 5/8" DENSGLASS GOLD EXT. GRADE GYP. SHEATHING, FIRE CODE CORE
 - 2x6 STUDS @ 16" O.C.
 - 5 1/2" KRAFT-FACED BATT INSULATION (R-21) (KRAFT-PAPER ON WARM-SIDE)
 - 5/8" TYPE X GYP. BOARD

- (2) FLOOR CONSTRUCTION (1 HR. UL #L521)
 S/C = 59' I/C = 51' (VINYL) 79' (CARPET)
 - SCHEDULED FLOORING
 - 1 1/2" LIGHTWEIGHT CONCRETE FLOOR TOPPING
 - 3/4" T&G OSB SUBFLOORING - SEE STRUCT.
 - PREFABRICATED WOOD TRUSSES @ 16" O.C. - SEE STRUCT.
 - 3 1/2" ACOUSTICAL GLASS FIBER BATT INSULATION, UL LISTED
 - 1/2" GALV. STL. RESILIENT CHANNELS @ 16" O.C.
 - 1 LAYER 5/8" FIRECODE "C" CORE GYP. BD.

- (4) WALL CONSTRUCTION (1 HR. UL #U305)
 - FIBER-CEMENT SIDING (SEE ELEVATIONS)
 - CONT. TYVEK STUCCO WRAP AIR INFILTRATION BARRIER
 - (1) LAYER 5/8" DENSGLASS GOLD EXT. GRADE GYP. SHEATHING, FIRE CODE CORE
 - 2x6 STUDS @ 16" O.C.
 - 5 1/2" KRAFT-FACED BATT INSULATION (R-21) (KRAFT-PAPER ON WARM-SIDE)
 - 5/8" TYPE X GYP. BOARD

- (2) FLOOR CONSTRUCTION (1 HR. UL #L521)
 S/C = 59' I/C = 51' (VINYL) 79' (CARPET)
 - SCHEDULED FLOORING
 - 1 1/2" LIGHTWEIGHT CONCRETE FLOOR TOPPING
 - 3/4" T&G OSB SUBFLOORING - SEE STRUCT.
 - PREFABRICATED WOOD TRUSSES @ 16" O.C. - SEE STRUCT.
 - 3 1/2" ACOUSTICAL GLASS FIBER BATT INSULATION, UL LISTED
 - 1/2" GALV. STL. RESILIENT CHANNELS @ 16" O.C.
 - 1 LAYER 5/8" FIRECODE "C" CORE GYP. BD.

- (5) WALL CONSTRUCTION (1 HR. UL #U305)
 - CULTURED STONE VENEER (SEE ELEVATIONS)
 - MORTAR SETTING BED
 - GALV. MTL. LATH PER MANUF. REQ'S-ATTACH TO STUDS
 - MORTAR JOINT, TYP.
 - SECOND LAYER OF CONT. "HOME WRAP" AIR INFILTRATION BARRIER
 - COSELLA-DORKEN DELTA8-DRY DRAINAGE PLANE
 - CONT. "HOME WRAP" AIR INFILTRATION BARRIER BY TYVEK
 - (1) LAYER 5/8" EXT. GRADE GYPSUM SHEATHING, FIRECODE CORE
 - 2 X 6 WOOD STUDS @ 16" O.C. - SEE STRUCT.
 - 5 1/2" KRAFT-FACED GLASS FIBER BATT INSULATION (R-21), U.L. CLASSIFIED (KRAFT PAPER INSTALLED ON WARM SIDE)
 - (1) LAYER 5/8" TYPE X GYP. BOARD

- (3) FLOOR CONSTRUCTION
 - SCHEDULED FLOORING
 - CONCRETE SLAB-ON-GRADE, TYP. (SEE STRUCT.)
 - 10 MIL. POLYETHYLENE VAPOR AND SOIL GAS RETARDER, TYP.
 - 2" THK. POLYSTYRENE PERIMETER INSULATION, TYP.
 - CRUSHED STONE BASE, TYP. (SEE STRUCT. & SOIL REPORT)

NO.	ISSUED FOR:	DATE
1	DD REVIEW	08/26/11
2	100% DD	09/02/11

NOT FOR CONSTRUCTION

© 2011 WORN JERABEK ARCHITECTS, P.C.

STAMP

EXPIRATION DATE: 11.30.2012

PROJECT NUMBER:	SHEET NUMBER:
10597	A5.1
DR. BY: HD	
CK. BY: TW	